

# INSIDE EDGE COMMERCIAL INTERIOR SERVICES

PROVIDING CUSTOM SOLUTIONS FOR COMMERCIAL SPACES  
ON A NATIONWIDE AND LOCAL LEVEL



## WHO IS INSIDE EDGE COMMERCIAL INTERIOR SERVICES?

Inside Edge is a Commercial Interior Services company offering customized solutions for:

### FLOORS, WALLS, CEILINGS, FIXTURES, AND STOREFRONTS.

We specialize in nationwide remodel and refresh programs for retail customers. Our collection of products and services can be bundled together or chosen a la carte, to support our customers' needs.

With one point of contact, Inside Edge's family of brands is here to support our customer's vision from design to execution.



FLOORS



WALLS



CEILINGS



FIXTURES



STOREFRONTS

- Concrete Polishing
- Carpet Tile
- Broadloom Carpet
- Ceramic Tile
- LVT/LVP
- VCT
- Sheet Vinyl

- Patching and Painting
- Prefabricated Walls
- Modular Walls
- Coating and Resurfacing
- Wall Covering
- Specialty Finishes

- Coating and Resurfacing for Acoustical Tile
- Turn-Key Services for Vinyl Ceilings
- Painting  
*(Open Deck Ceilings)*

- Design and Engineering
- Prototyping
- Casework
- Wood and Metal
- Specialty
- Resurfacing

- Canopy
- Fascia
- Portal Entry
- ACM Kitted Wall Cladding Systems
- Custom Designs

# INSIDE EDGE FULL SERVICE COMMERCIAL FLOORING SERVICES



Project  
Management Experts



Reliable & Consistent  
Installation



Experienced  
Solutions Provider

## WHO IS INSIDE EDGE FLOORING?

Inside Edge Flooring is a **project management and flooring installation** company that is 100% employee-owned, our people care about our business and those we work for.

We provide commercial flooring services with a solutions-driven approach and deliver consistency, with best-in-class quality and communication at a competitive price.



## KEY SERVICES INCLUDE:

Whatever your flooring needs require, look to Inside Edge for all your customized solutions. We are there every step of the way from planning to installation.

- Planning, Forecasting, and Estimating
- Project Management
- Material Management and Logistics
- Site Testing and Assessments
- Installation: Carpet, LVT, Ceramic, Concrete, VCT, etc.
- Moisture Mitigation
- Furniture Moving/Lift



# INSIDE EDGE FULL SERVICE COMMERCIAL PAINTING SERVICES



Experienced Crews & Exceptional Service



Local Touch with a Nationwide Reach

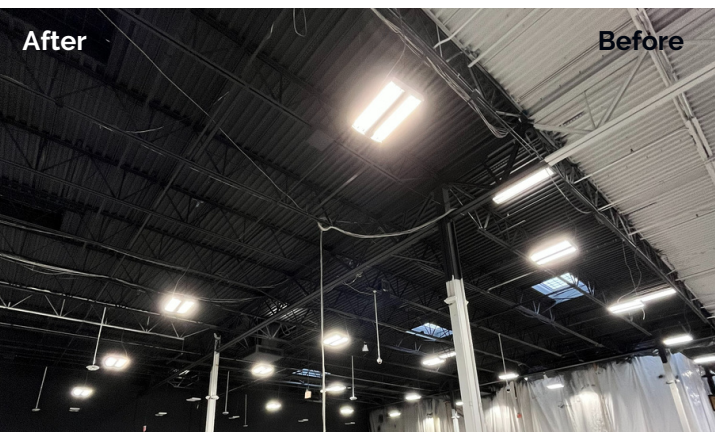


Quality Results. On Time & On Budget

## WHO IS INSIDE EDGE COMMERCIAL INTERIOR SERVICES?

Inside Edge offers **full service commercial wall services**. Our experienced, nationwide crews specialize in providing interior and exterior painting, coatings, wall coverings, and specialty finishes for any commercial space.

Inside Edge can execute and manage your next paint refresh project, delivering quality results while saving you time and money.



## INTERIOR & EXTERIOR SERVICES INCLUDE:

Whatever your painting needs require, look to Inside Edge for all your customized solutions.

- Planning and Estimating
- Project Management
- Site Assessments
- Pressure Washing
- Patching
- Surface Repairs



## Expertise In:

- Painting
- Coatings
- Elastomeric Weatherproof Coatings
- Specialty Finishes
- Wall Coverings



# PROCOAT PRODUCTS

## ACOUSTICAL CEILING TILE RESTORATION EXPERTS



Minimize Facility  
Disruption



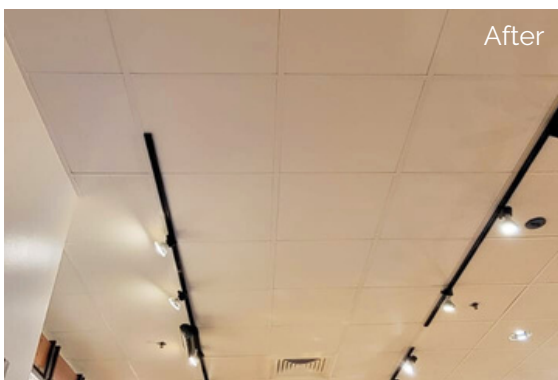
Environmentally  
Friendly



Brighter & Cleaner  
Apperance

### WHO IS PROCOAT?

ProCoat Products is the pioneer of **acoustical ceiling tile restoration** in the United States. We make and install a premium, non-bridging, acoustical coating that minimizes facility disruption, reduces landfill waste and dramatically brightens areas without the heavy cost of replacement.



### KEY BENEFITS INCLUDE:

ProCoat offers innovative coating products that allow you to recoat versus replace a wide range of finishes. From acoustical ceiling tiles, to bathroom partitions and FRP walls, we have a solution fit for your needs!

- **ProCoustic:** Minimize disruption, save time, money and the environment by coating your existing ACT vs replacing.
- **ProBond:** Tougher than paint, recoat most finishes with a customized color for a brand new look.
- **ProVinyl:** Turn Key solution to refinish your vinyl ceiling tiles to provide a like new finish.
- **ProWall:** Revive your FRP and Acrovyn wall panels with our coating that works where paint doesn't.

# PRODUCT DESIGN SERVICES

## RETAIL FIXTURE, DISPLAY, AND STORE FRONT EXPERTS



Cost  
Competitive



Quick  
Turn Around



Bespoke Design  
Solutions

### WHO IS PRODUCT DESIGN SERVICES?

At PDS, we specialize in **designing, fabricating, and installing custom retail fixtures, casework and pre-fabricated walls** that perfectly reflect your brand. With both international and domestic manufacturing capabilities, we deliver high-quality, cost-effective solutions that are tailored specifically to your needs.



### KEY BENEFITS INCLUDE:

With 30 years of industry experience we pride ourselves on our integrity and innovation. Our goal is to develop long term relationships with our customers.

- Custom Design and Engineering Services
- 3D Rendering
- Fabrication
- Powder Coating Capabilities
- Fast Track Prototyping
- Account and Project Management
- International and Domestic Capabilities
- Installation and Quality Control
- Materials: **Metal, Millwork, Acrylic, Laminates, Solid Surface, Glass, etc.**



# PRODUCT DESIGN SERVICES

## RETAIL FIXTURE, DISPLAY, AND STORE FRONT EXPERTS



Cost  
Saving



Sustainable  
Products



Innovative &  
Proprietary System

### WHO IS PRODUCT DESIGN SERVICES?

Product Design Services (PDS) uses proprietary panel, frame, and channel assemblies for portals, storefronts, and canopies that create durable and time saving installations. We understand how a Store exterior plays a monumental role in creating a first and lasting impression for a brand.



### KEY BENEFITS INCLUDE:

Using the latest in manufacturing and ACM kitted wall cladding systems, we save our clients significant time and money with materials and installation.

- Design and Engineering Services
- 3D Rendering
- Code Conformance and Compliance
- Quality Control and Assurance
- Project Management and Installation

### Benefits of Aluminum Composite Panels:

- Lightweight
- Durable
- Fire Resistant
- Low Maintenance
- Endless Color Options
- Cost-Effective
- Recyclable
- Easy to Install



PRODUCT DESIGN SERVICES